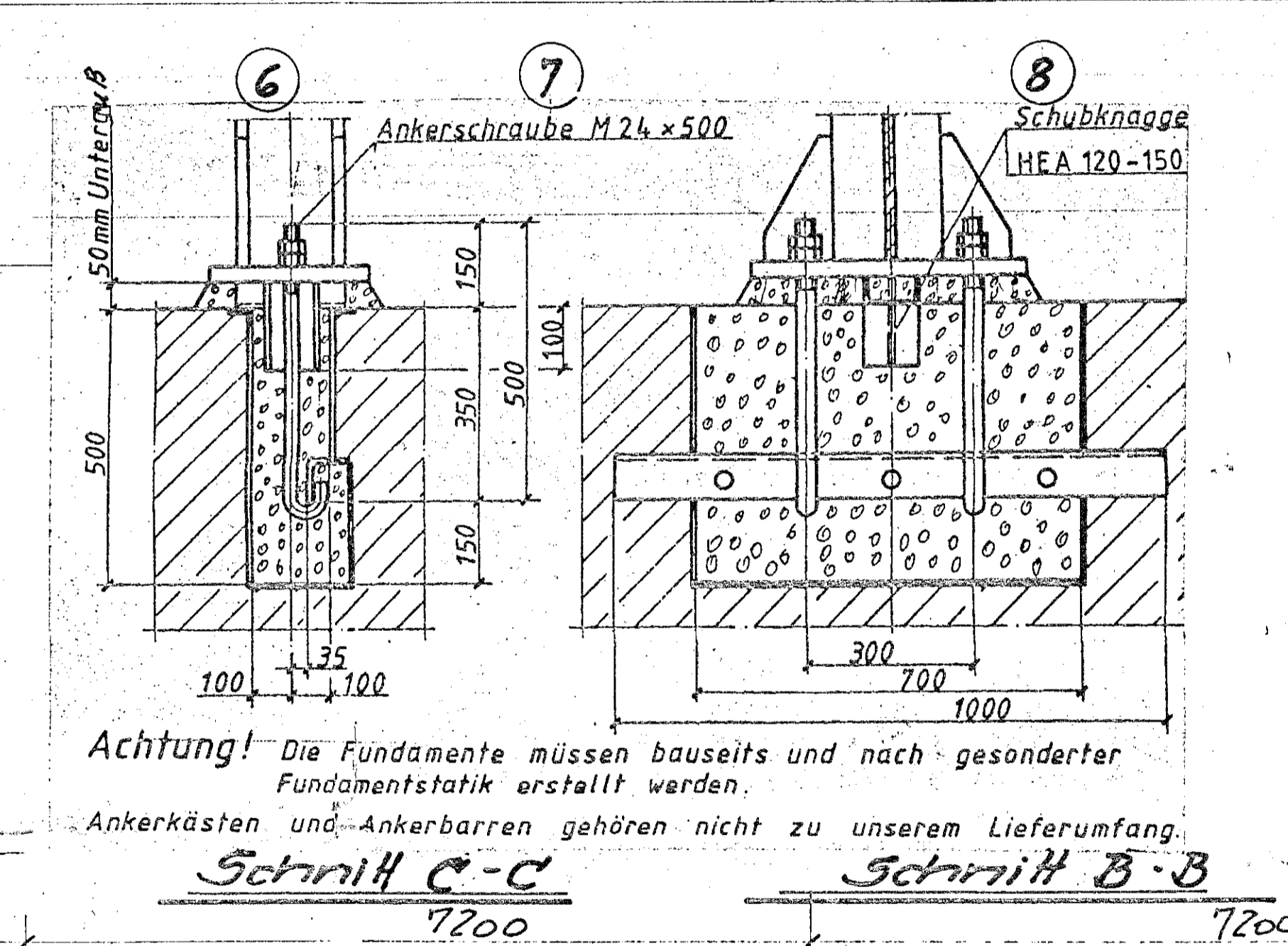
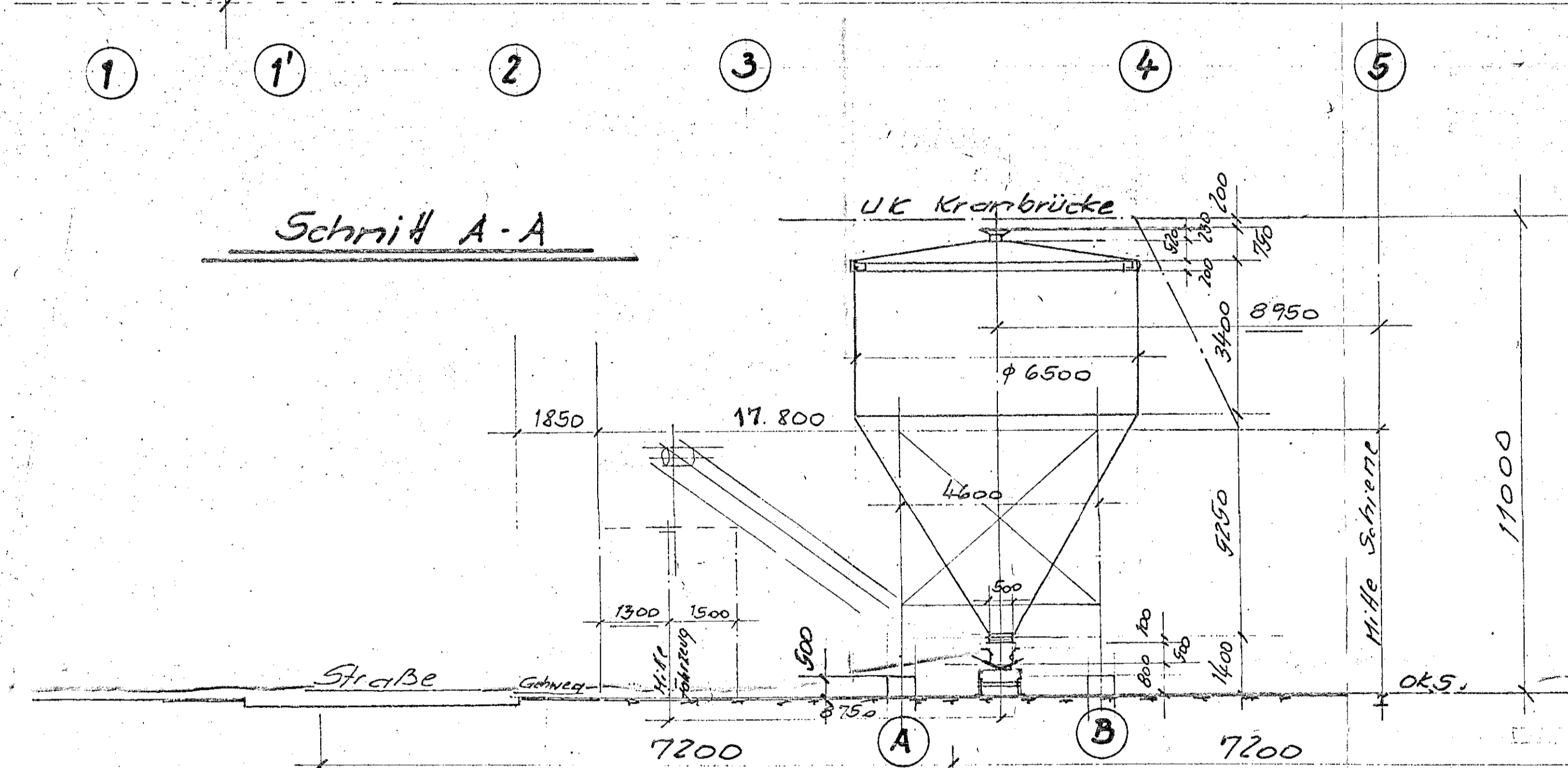
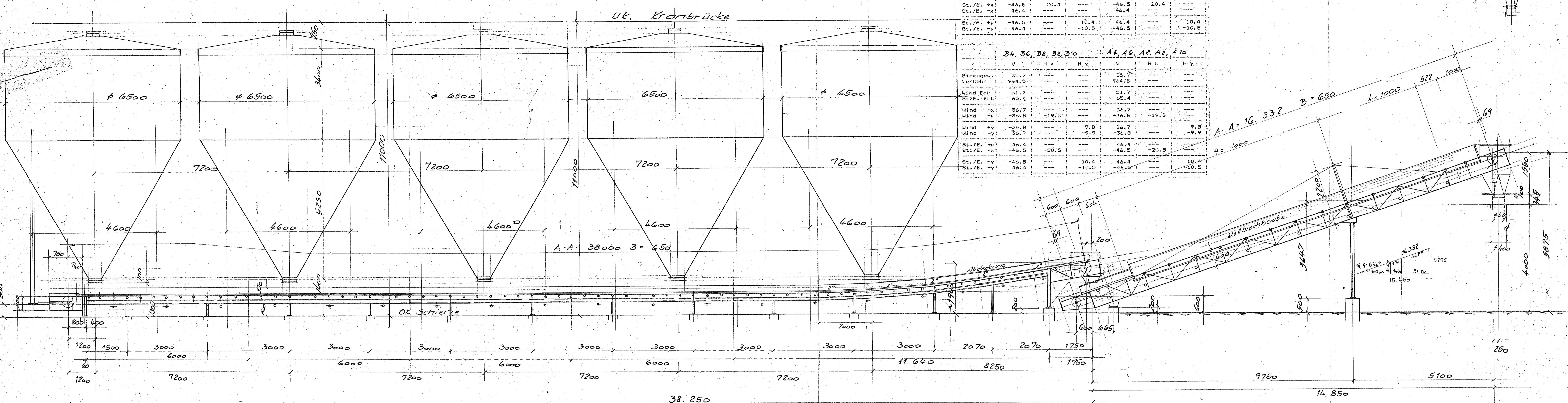


Belastung in Höhe Unterkante Stütze (kN) (Aktionskräfte)

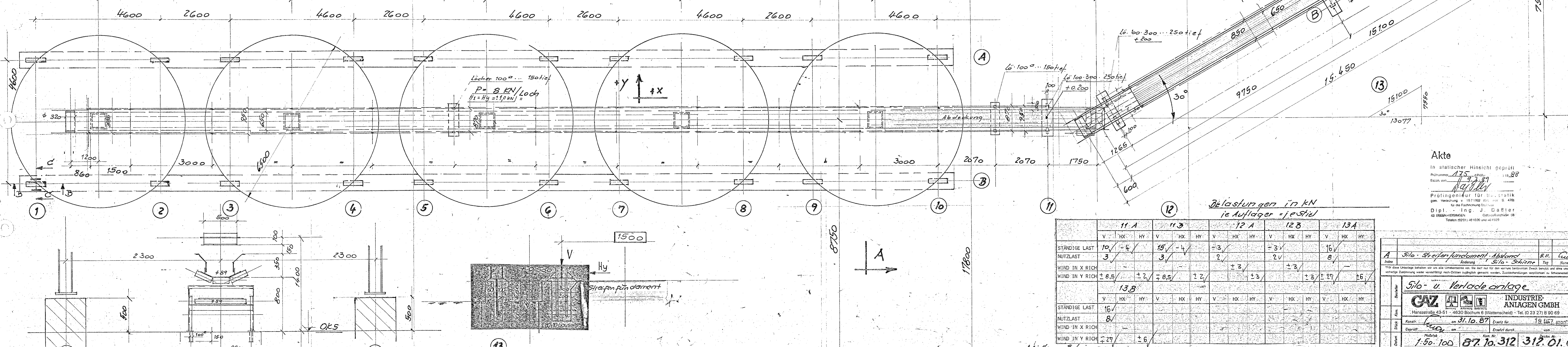
	39, 37, 35, 31, 33			19, 17, 15, 11, 13		
	V	Hx	Hy	V	Hx	Hy
Eigengew.	35.7	---	---	35.7	---	---
Verkehr	94.5	---	---	94.5	---	---
Wind Eck	51.7	---	---	51.7	---	---
St./E. Eck	65.4	---	---	65.4	---	---
Wind +x	-36.8	19.2	---	-36.8	19.2	---
Wind -x	36.7	---	---	36.7	---	---
Wind +y	-36.8	---	9.8	-36.7	---	9.8
Wind -y	36.7	---	-9.9	-36.8	---	-9.9
St./E. +x	-46.5	20.4	---	-46.5	20.4	---
St./E. -x	46.4	---	---	46.4	---	---
St./E. +y	-46.5	---	10.4	-46.4	---	10.4
St./E. -y	46.4	---	-10.5	-46.5	---	-10.5

Fundamentlasten

	34, 36, 38, 32, 310			A1, A2, A3, A2, A10		
	V	Hx	Hy	V	Hx	Hy
Eigengew.	35.7	---	---	35.7	---	---
Verkehr	94.5	---	---	94.5	---	---
Wind Eck	51.7	---	---	51.7	---	---
St./E. Eck	65.4	---	---	65.4	---	---
Wind +x	-36.8	-19.3	---	-36.8	-19.3	---
Wind -x	36.7	---	---	36.7	---	---
Wind +y	-36.8	---	9.8	-36.7	---	9.8
Wind -y	36.7	---	-9.9	-36.8	---	-9.9
St./E. +x	-46.5	-20.5	---	-46.5	-20.5	---
St./E. -x	46.4	---	---	46.4	---	---
St./E. +y	-46.5	---	10.4	-46.4	---	10.4
St./E. -y	46.4	---	-10.5	-46.5	---	-10.5



Achtung! Die Fundamente müssen bauseits und nach gesonderter Fundamentstatik erstellt werden. Ankerkästen und -ankerbarren gehören nicht zu unserem Lieferumfang.



Belastungen in kN ie Auflager je Stütze

	11 A			11 B			12 A			12 B			13 A		
	V	Hx	Hy	V	Hx	Hy	V	Hx	Hy	V	Hx	Hy	V	Hx	Hy
STÄNDIGE LAST	10	-4	---	10	-4	---	10	-4	---	10	-4	---	10	-4	---
NUTZLAST	3	---	---	3	---	---	3	---	---	3	---	---	3	---	---
WIND IN X RICH	± 8.5	---	± 2	± 8.5	---	± 2	± 8.5	---	± 2	± 8.5	---	± 2	± 8.5	---	± 2
WIND IN Y RICH	---	± 2	---	---	± 2	---	---	± 2	---	---	± 2	---	---	± 2	---
STÄNDIGE LAST	16	---	---	16	---	---	16	---	---	16	---	---	16	---	---
NUTZLAST	8	---	---	8	---	---	8	---	---	8	---	---	8	---	---
WIND IN X RICH	---	---	---	---	---	---	---	---	---	---	---	---	---	---	---
WIND IN Y RICH	---	---	---	---	---	---	---	---	---	---	---	---	---	---	---

Akte  
In statischer Hinsicht geprüft  
Prüfername: *17.5.2007*  
Prüfungsort: *17.5.2007*  
Prüfungsinstitut für Bau-Statik  
Prof. Dr.-Ing. J. Gähler  
Dipl.-Ing. J. Gähler  
Gähler-Statik-Service

510- u. Verladeanlage  
INDUSTRIE-ANLAGEN GMBH  
Manssstraße 43-61 • 4630 Bochum 8 (Wattenscheid) • Tel. (0 23 27) 8 90 69  
Kontaktnummer: 31.10.87  
Erstellt durch: 19.07.2007  
Maststab: 1:50, 100, 87.10.312, 312.01.01